

# THE ADVENTURES OF

# ROCK

&

# LOG



[ExplorePAWaters.com](http://ExplorePAWaters.com)  
[FishandBoat.com](http://FishandBoat.com)

Recursos  
en español



# BECOME A PARTNER

Watch the Episode:



What's up! Hiiiiii!



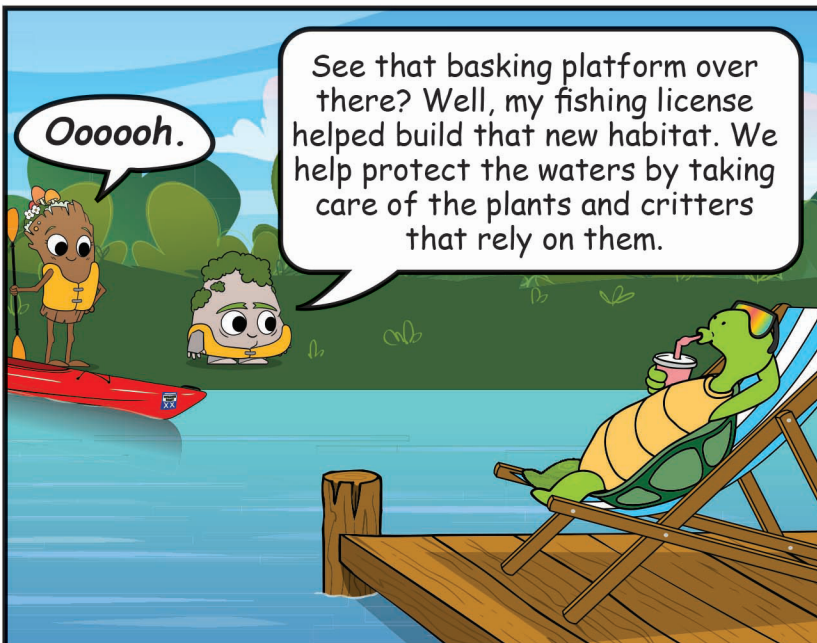
Did you know a fishing license gives back to our beautiful waterways? You too can help conserve the waterways by buying a fishing license, launch permit or boat registration. Your purchase...

- Helps build habitat structures
- Takes care of plants and critters
- Adds access to the water
- Builds docks, boat ramps and kayak launches for everyone



Ooooooh.

See that basking platform over there? Well, my fishing license helped build that new habitat. We help protect the waters by taking care of the plants and critters that rely on them.



*I love them all so much.*



There's no time to waste. Be the ultimate partner and keep the waters you love healthy.

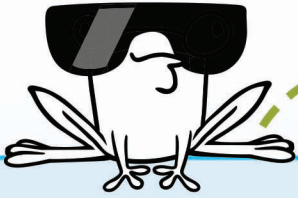


Get Your License Today:



# LICENSE TO HELP

Going fishing in Pennsylvania is easy whether it's your first time or your first time since last week. Always have an adult with you when you go on an adventure, and make sure you have the proper gear and clothing. Remember to check the weather, so you know what to pack for a fun and safe day. Find the words below to be prepared for your next fishing trip.



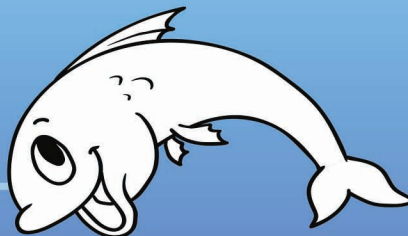
## WORD SEARCH

(Words are forward and backward.)

- SUNSCREEN
- TOWEL
- SNACKS
- SUNGLASSES
- FISHING NET
- CAMERA
- HAT
- DRINKING WATER
- FIRST AID KIT
- ROD
- REEL
- JIGS
- MEASURING TAPE
- HOOKS
- WEIGHTS
- BOBBERS
- PLIERS
- CLIPPERS
- COMFORTABLE SHOES



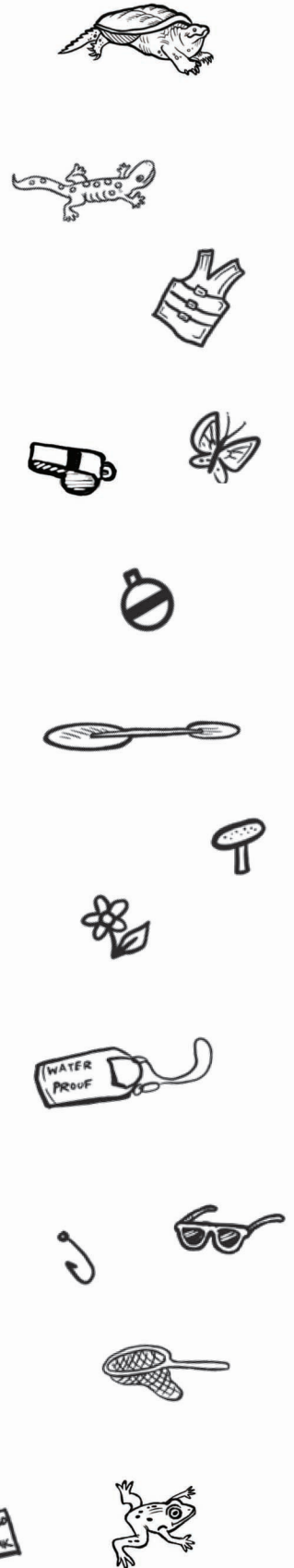
Answers on Back Cover



# LICENSE TO HELP

## FIND THE HIDDEN OBJECTS

Locate the objects below: turtle, salamander, life jacket, whistle, butterfly, bobber, paddle, mushroom, wildflower, dry bag, hook, sunglasses, net, bass, reel, line spool, lure, license, launch permit and frog.



artwork: Michael Kensing



Answers on Back Cover

# MATCHING

Draw a line to match the words to the correct lures.

Spinners



Spoon



Crankbaits/  
Plugs



Jig



Topwater/  
Surface Lures



Answers on Back Cover

Fishing Baits and Lures:



# FILL IN THE BLANKS

Using the American Sign Language (ASL) alphabet in the box below, fill in the blanks to reveal baits found in supermarkets or grocery stores.

Supermarket Baits:



## ASL ALPHABET


Copyright © 2008 StartASL.com

Answer Key: 1.bread; 2.cheese; 3.hot dogs; 4.cheese; 5.peas



# FIND THE DIFFERENCES

There are 10 differences in the two pictures below. Can you find all of them?



Answer Key: Salamander, mushroom color, oar color, boat color, trout (fish) species, Log has no life jacket, color of Rocks' life jacket, Rocks' hair color, incorrect boat registration, Log is frowning

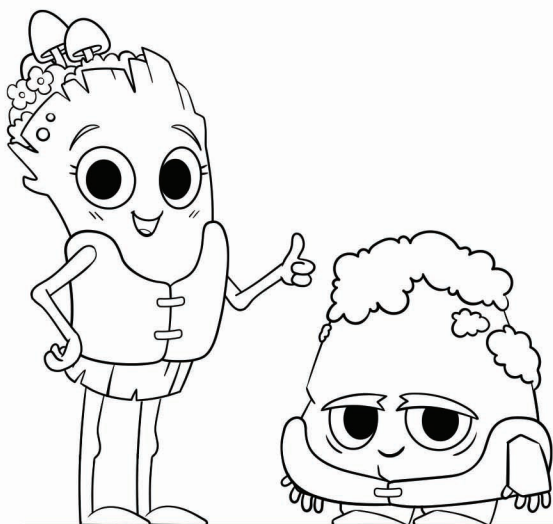
# THE SOUND OF SAFETY



# THE SOUND OF SAFETY

Can't you just feel adventure in the air? Hopping in a kayak, canoe or paddleboard is a fun and inexpensive way to experience Pennsylvania's waterways. And, with 2,000 miles of water trails and hundreds of lakes to explore, finding a place to paddle is easy with the map on [ExplorePAWaters.com](http://ExplorePAWaters.com).

On your next outdoor adventure, write your thoughts in the box to the right and draw a picture of what you see. Use a field guide to find out more or go to [FishandBoat.com](http://FishandBoat.com).



## Journal Notes

Date: \_\_\_\_\_ Time: \_\_\_\_\_

Location: \_\_\_\_\_

Weather: \_\_\_\_\_

Thoughts/Observations: \_\_\_\_\_

---

---

---

---

---

---

---

---

## WORD SCRAMBLE

Know the waters you plan to float before you go, and be aware of your surroundings on the water, especially if you encounter powerboats. Changes in weather can affect your trip. Unscramble the safety hazards listed below:

1. korcs \_\_\_\_\_

2. wol-daeh masd \_\_\_\_\_

3. trurecn \_\_\_\_\_

4. tlgnginhi \_\_\_\_\_

5. dab ewtahre \_\_\_\_\_

6. dclo tawre \_\_\_\_\_

7. dwni \_\_\_\_\_

8. btswoarepo \_\_\_\_\_

9. gol mjas \_\_\_\_\_

10. twihe treaw \_\_\_\_\_

# THE SOUND OF SAFETY

Here are some ways to safely play along PA waterways. Fill in the missing letters.

1. W\_\_\_\_\_ a life jacket.
2. Have a b\_\_\_\_\_ buddy.
3. Check the w\_\_\_\_\_.
4. Have a f\_\_\_\_\_ p\_\_\_\_\_.
5. Carry a w\_\_\_\_\_ and flashlight.
6. Don't jump in the b\_\_\_\_\_.
7. Share the w\_\_\_\_\_. Be considerate of others.
8. Never go p\_\_\_\_\_ alone.



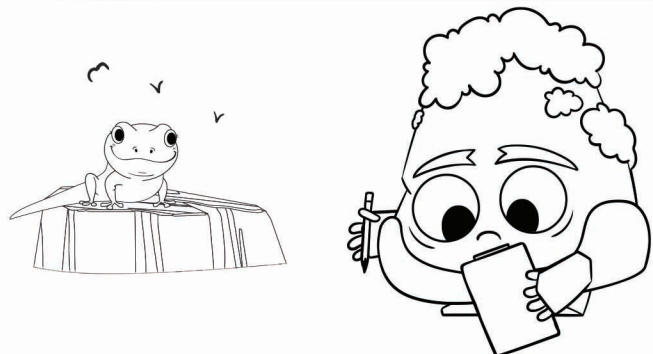
Answer Key: 1. Wear, 2. boating, 3. weather, 4. float plan, 5. whistle, 6. boat, 7. water, 8. paddling

Be safe. Let others know the details of your paddling trip by leaving a float plan. Complete the float plan provided by Rock for your next paddling adventure.

## FLOAT PLAN

Complete this information before going boating and leave it with a reliable person. When you return, remember to contact that person.

1. Contact Name: _____ Address: _____ Phone: _____ E-mail: _____	5. Leaving From: _____ Date: _____ Time: _____
2. Boat Type: _____ Color: _____ Length: _____ Registration Number: _____	6. Returning To: _____ Date: _____ Time: _____
3. Operator Name: _____ Phone: _____ Passenger Name: _____ Phone: _____ Passenger Name: _____ Phone: _____ Passenger Name: _____ Phone: _____	7. Stop 1: (Location) _____ (Time) _____ Stop 2: (Location) _____ (Time) _____
4. Automobile Make/Model: _____ Color: _____ License Plate Number: _____ Parked at: _____	8. Emergency Contact (if not returned by): Date: _____ Time: _____ Name/Relationship: _____ Phone: _____



How to Paddle:



# HOW TO PADDLE A KAYAK

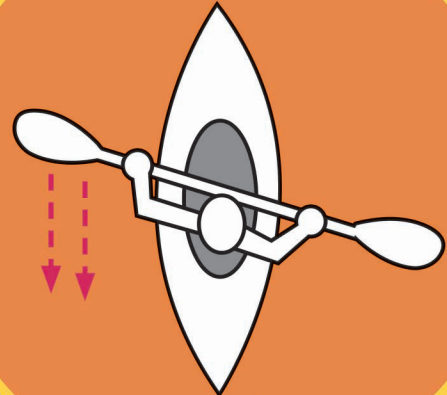


## PADDLE HOLD



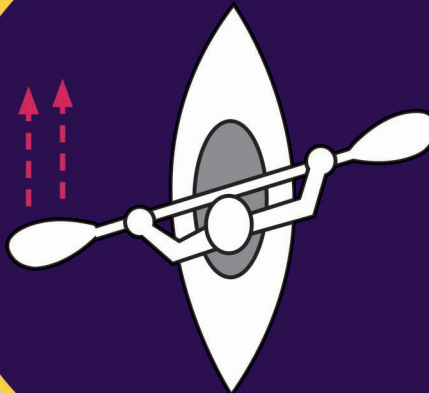
This is the proper way to hold a kayak paddle.

## FORWARD STROKE



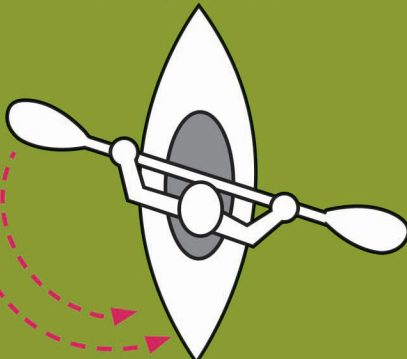
Moves the kayak forward.

## REVERSE STROKE



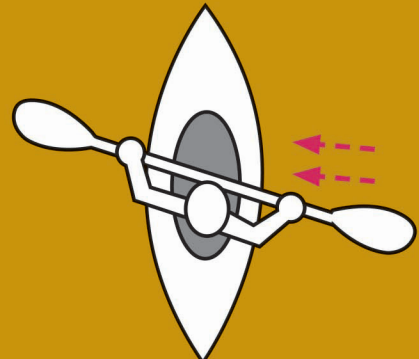
Moves the kayak backwards.

## SWEEP STROKE (Moving left shown)



Moves the kayak towards the left or right depending on the stroke side.

## DRAW STROKE



Moves the kayak sideways.

# BROOK TROUT COLORING PAGE



artwork-Michael Kensinger

The Brook Trout, *Salvelinus fontinalis*, has a dark-green body. Its back is dark olive-green or gray green, with dark, wormlike markings. The sides and belly are lighter, with green, gray or lavender tones. Its sides have scattered red dots, surrounded by blue halos. The belly is pale yellow or pale orange. Fins are orange with a white edge and a black stripe.

### Field Notes:

Brook Trout live in limestone, spring-fed streams and cold, mountain creeks. They also adapt to

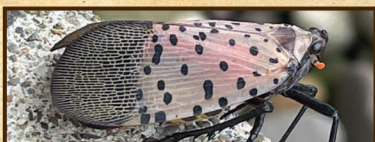
ponds and lakes. Brook Trout feed on aquatic and terrestrial insects, crustaceans and small fish.

### Did You Know?

The Brook Trout is Pennsylvania's official state fish. It needs cold water that is not polluted to survive. So, Brook Trout indicate clean water. The name, *fontinalis*, means "of springs".

# PENNSYLVANIA'S UNWANTED

Your mission, should you choose to accept, is to draw lines from the image of each invasive species to its description. An invasive species is any non-native plant or animal introduced into an area that damages the environment, which costs money to fix, or harms human health.



SPOTTED LANTERNFLY



A fish with a rounded head that rapidly reproduces, eats native mussels and competes with native fish for food.

Find Out More and Report:



RED-EARED SLIDER



A large, aggressive crayfish, with rust-colored spots on each side of its body, that harms native crayfish.



ROUND GOBY



It spreads rapidly and filters nutrients and oxygen from the water.



ZEBRA MUSSEL



An insect that feeds on plant sap of many plants including grapevines, maples and black walnut.



HYDRILLA



Often a pet, it competes with native species for food and other resources when released into the wild. Easily identified by the red color behind its eyes.



NEW ZEALAND MUDSNAILS



An aquatic invasive plant that can overtake a lake. Can grow several inches a day in ideal conditions.



RUSTY CRAYFISH



They quickly invade an ecosystem by overtaking native snails.



NORTHERN SNAKEHEAD



A torpedo-shaped fish that competes with other fish for forage and habitat.

Answers on Back Cover

# EASTERN HELLBENDER COLORING PAGE



artwork-Michael Kensinger

The Eastern Hellbender, *Cryptobranchus alleganiensis alleganiensis*, is more commonly gray but can be olive brown to almost black. The belly is lighter. Black spots sometimes pepper the back and sides.

### Field Notes:

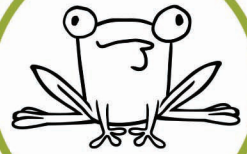
Eastern Hellbenders favor fast-moving, mid-sized streams and river channels with clear water.

They prefer habitat with boulders, large stones and other large, loose debris.

### Did you Know?

The Eastern Hellbender is a giant salamander. An adult may be 11 to 20 inches long. This harmless creature requires specific habitat conditions to survive, and its presence indicates excellent water quality. The Eastern Hellbender is Pennsylvania's state amphibian.

## OUTDOOR ADVENTURES CHALLENGE



Adventures lead to exciting discoveries. Here are some ways to keep going when you have the urge to get outdoors. Use a camera to get pictures of your findings.

- Find and identify a frog and a fish.
- Go outside after it rains and see what creatures have emerged.
- Point out two types of habitat structures.
- Identify what you find under four rocks.
- Observe a turtle or a salamander.
- Relax by a waterway and describe the way it makes you feel and what you hear.
- Fish in two places you have not fished before.
- Take a friend fishing who has never fished before.
- Discover a trail that leads to a fishing and/or boating spot.
- Plant a tree.
- Participate in a fishing or boating skills event.
- Skip rocks.
- Hike to a waterfall.
- Listen to frogs calling.
- Share a photo of your fishing or boating adventure with us. See back cover for details.



### Leave No Trace

1. Plan ahead and prepare.  
*Know the rules for the area you're visiting.*
2. Travel/camp on durable surfaces.  
*Use existing trails and campsites.*
3. Don't litter.  
*Pack it in; pack it out. Check the area for trash.*
4. Leave what you find.  
*Do not remove rocks, plants or artifacts.*
5. Minimize campfire impacts.  
*Use existing fire rings or campfires in designated areas and completely extinguish them.*
6. Respect wildlife.  
*Observe wildlife from a safe distance, and don't feed them.*
7. Be considerate of other visitors.  
*Avoid creating excessive noise and disturbances.*



## BUILDING HOMES FOR FISH

by Donald Kelly

Where do fish live? In the water, of course. In short, that's true, but ask an angler that question, and they'll likely point out the fallen trees, rock rubble humps and weed beds. Great fisheries depend on having great habitat and homes for fish. Adult fish need places to eat and breed, and they need safe places for young fish.

When lakes were built in Pennsylvania, much of the natural fish habitat was removed. Over the past few decades, the lake habitat section of the Pennsylvania

Fish and Boat Commission has worked to replace lake habitat by building and placing artificial structures for fish to call home. Porcupine cribs, short vertical plank structures, rock rubble humps and post clusters help create and maintain healthy fisheries.

While wandering down the candy aisle of the local grocery store, I began thinking that gummy fish need homes, too! Building and placing candy structures from the comfort of home teaches the importance of good habitat and how to find good fishing spots.



### Habitat for Great Fishing



#### WHAT YOU'LL NEED:

- Cookie Sheet
- Parchment Paper
- Blue Frosting
- Green or White Frosting
- Raisins/Raisinets
- M&M's
- Gummy Fish
- Pretzel Rods
- Pretzel Sticks



#### Step 1:

Line a cookie sheet, or baking tray, with parchment paper to create a lake.

#### Step 2:

Spread blue frosting and fill the empty lake with "water".

#### Step 3:

Build fish habitats using a variety of candies and pretzels. Use frosting as glue to hold structures like porcupine pretzel cribs together. Raisinets and M&M's make terrific rocks and boulders. For structure ideas, go to [FishandBoat.com](http://FishandBoat.com).

#### Step 4:

Place structures in the water, and position gummy fish to show how the structures are utilized in a real lake.

#### Step 5:

Enjoy a sweet and salty treat of edible fish structures.



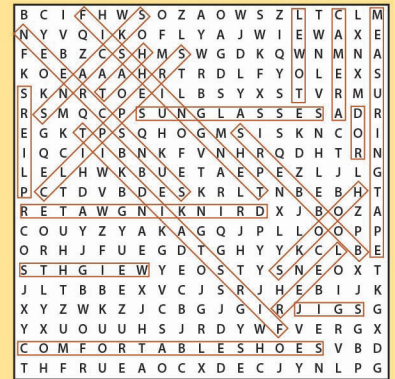
@PAFishandBoat #PAFishandBoat

Share photos of your fishing and boating adventures. Remember to wear a properly fitted life jacket if you're on the water. And, make sure it's fully zippered and buckled. Then, encourage your friends, family and classmates to submit their photos, too!

Submit Your Adventure:



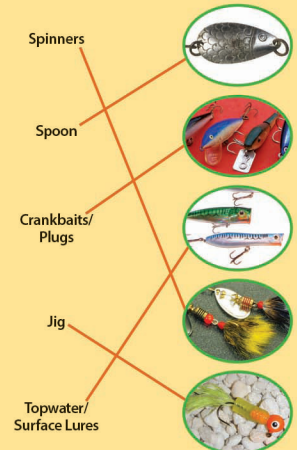
"Word Search" Answers:



"Find The Hidden Objects" Answers:



"Matching" Answers:



"Pennsylvania's Unwanted" Answers:

